

# SOUTHWICK *VILLAGE NEWS*

*A quarterly publication by Southwick Parish Council*

*Spring 2023*



## – Southwick Parish Council –

The Council has eleven elected members and meets on the third Tuesday of each month in the Village Hall. For Parish Council meeting minutes, please visit the Southwick Community website [www.southwickwilts.co.uk](http://www.southwickwilts.co.uk) or read them on the Parish Council notice boards (located at the entrance to the village hall and the bus shelter at Teeside).

### Clerk

Nicola Duke April Rise, 81 Studland Park, Westbury, Wiltshire BA13 3HN  
01373 864127

### Chair

Mr. J. Eaton 30 Blind Lane, Southwick BA14 4PG  
07818 870098

### Vice Chair

Mrs. T.J. Curry Bramley Cottage, 26 Blind Lane, Southwick BA14 9PG  
07771 807080

Mr. S. D. Carey Longfield, Frome Road, Southwick BA14 9NJ  
01225 764210

Mr. G E. Clayton 5 Blind Lane, Southwick BA14 9PQ  
01225 762447

Mr. J. Heydon 57 Hollis Way, Southwick BA14 9PH  
01225 351817

Mr. D. J. Jackson Mutton Marsh Farm, Southwick BA14 9PE  
07837 154517

Mrs. K. Noble 230 Chantry Gardens, Southwick BA14 9QX  
01225 352503

Mr. H. Prickett 2 Hawkeridge Road, Yarnbrook, Trowbridge BA14 6AD  
01225 767685

Mr. S. N. Porter 24 Blind Lane, Southwick BA14 9PG  
07970 074036

Mrs. P. E. Snell 6 Lamberts Marsh, Southwick BA14 9PB

Mrs. C. M. J. Watson 45 Southfield, Southwick BA14 9PW  
01225 760637

On page 16 of this newsletter is the **Useful Contacts** list. If you run an organisation and you are not listed or your details are incorrect, please contact the publication by email – [southwicknl@gmail.com](mailto:southwicknl@gmail.com)

The Parish Council does not guarantee or accept liability for any literature, advertised goods or services. They have not inspected or made checks regarding suppliers. All opinions expressed in this newsletter are those of the writer/contributor and not necessarily those of the Parish Council or Compiler.

**Free admission**

**Southwick Parish Council**  
warmly welcomes you to  
come and celebrate with us

**Coronation Weekend**  
**Saturday 6th May**  
7 pm - 12 pm  
Age Tones ~ On The Edge  
Bar Available

**Sunday 7th May**  
From 4 pm  
Royal Variety Show ~ Tea & Cakes

**Monday 8th May**  
From 1 pm  
Childrens Royal Dress Competition ~ Bouncy  
Castle ~ Picnic ~ Donkey Rides ~ Gun Dog  
Display ~ Childrens Fun Dog Show

**STALLS**  **BBQ**



Southwick Rainbows, Brownies and Guides

# **JUMBLE**

# **SALE**

## **SAT 20<sup>th</sup> MAY**

## **SOUTHWICK VILLAGE HALL**

**BA14 9QN**

**1pm**

**Admission £1**



## **1st Southwick Guides**

**Southwick Guides** have been pleased to welcome many new members from the Brownies and other friends joining the unit.

The guides have been busy with such a variety of practical activities including, decorating Christmas Yule Logs and Christmas Candles, learning new skills like sewing on buttons, hammering nails and an evening of first aid by the British Red Cross.

The Guides enjoyed a trip to the cinema to see the new Matilda film with guide units from the local area.

The Guides would like to thank the residents of Southwick that supported their Bingo before Christmas.

Our next Fundraising event is a JUMBLE SALE on Saturday 20th MAY at Southwick Village Hall at 1pm with the Southwick Rainbows and Brownies. Any offers of Jumble would be really appreciated and can be brought to the village hall from 11am on the 20th May or contact us on [1stsouthwickguides@gmail.com](mailto:1stsouthwickguides@gmail.com) to arrange collection etc.

The Guides are celebrating Thinking Day with the other girl guiding units in Southwick and North Bradley and making plans for a term of outdoor activities and their summer camp.

Although the guide unit is full at the moment, please contact us if you would like your daughter to be added to the waiting list at [1stsouthwickguides@gmail.com](mailto:1stsouthwickguides@gmail.com)

# Linked Pathways – Community Spaces (pt 1)

Sarah Gould

“HELLO, I thought I’d introduce myself. I’ve been enjoying working on the side path land between Fleur de Lys Drive and Chantry Gardens since last spring.

I spoke to the parish council before I started, to gain permission and agreed on what the plan would be.

Permission was granted and I got started, (single-handedly) to clear a lot of the weeds and dead and over running brambles and ivy. I cleared so much litter and local garden waste and I levelled the ground and made more room for the footpath.

I really hope to make it a better space for not only the local residents but also the local wildlife on ground and in flight.



I know it doesn’t look like much right now, but I’m hoping that over the years it will become a more established ‘wild garden’ that I maintain to a degree.

I’ve left some brambles so we can still enjoy the blackberries, along with the birds.

I’ve planted lots of donated shrubs, seeds and bought and planted lots of bulbs myself.

I would love to say a huge ‘THANK YOU’ to all of those who have donated shrubs and seeds...

Kim Kent – lots of seeds, Primula, Lily and Sweet Williams.

Maria Bailey – a large selection of garden plants

Libby Mayrick – wall flowers and seeds

Grace Cooper – seeds

Janet Riddle – small Buddleia, Teasles and Foxgloves

Jamie Harding’s Granny – mixed Daisy seeds

(Name unknown) lady from Fleur de Lys Drive – bulbs.

Roz & Stuart from Fleur de Lys Drive – Salvia



Stuart Bennett – large Iris plant

Julia Rudd (my mum from the Isle of Wight) – lots of seeds collected from her garden.

Please forgive me if I have missed off anyone’s name! I am so very grateful to everyone. THANK YOU!

Please keep donating!

*(Please don’t plant anything, dig up or cut down anything without prior permission. Thank you.)*

I would also like to ask our lovely local residents to please keep the area free of litter and dog poo/poo bags – I picked up and disposed of nearly 60 old filled dog poo bags when I first started!

Please don’t discard your local garden waste here too.

(I only have the use of my green bin and buckets I personally take up to the local recycling Centre as often as I can)

I really hope that villagers and visitors will enjoy walking through the pathway and will feel safer and happier enjoying the flora and fauna as the area develops.

Thank you

Sarah.

Donations of plants, seeds, bulbs etc to:

10 Fleur de Lys Drive  
Southwick

New from 1st November

# DROP IN CAFE

at Southwick Baptist Church



A chance to enjoy a **FREE** Cuppa & Cake  
1<sup>st</sup> & 3<sup>rd</sup> Tuesday afternoons 2pm – 4pm  
Everybody welcome (0-99 years!)  
We look forward to seeing you

Allow us a few moments to fill in the background to this. Around three to four years ago a team from within Southwick Baptist Church had set up and started FIASS (Free Introductory Advice Service Southwick), a free service available to all offering debt advice, benefits advice and assistance with CV writing and form filling. This service is still available at [www.southwickbaptistchurch.org.uk](http://www.southwickbaptistchurch.org.uk)

Shortly after that we began kicking the idea of starting a drop-in cafe for the people of the village. Then along came the pandemic, numerous lockdowns, and a prolonged period of social distancing and church closure which put the brakes on any thoughts of this.

This year, 2022, as we have now come to terms with 'living with Covid', we have been excited

to revisit the idea and we are pleased to say we held our first drop-in cafe on Tuesday 1st November. So we are off and running!

The purpose of the drop-in cafe is simple. To reach out to the community and open the doors of the church for the benefit of the local people, providing the opportunity for drawing village folk to meet together in a friendly environment where there will be a welcome for everyone whether a church-goer or not.

Everyone is welcome to come along, and stay as long as you like. We will provide free tea/coffee (or squash) and cake and/or biscuits – so why not pop along for a cuppa and a chat.

**We look forward to seeing you there.**

*Bob & Cathy (at SBC)*

[www.southwickbaptistchurch.org.uk](http://www.southwickbaptistchurch.org.uk)



## 1st Southwick Rangers Guides

The Southwick Rangers have welcomed lots of new members recently and spent a few evenings getting to know one another and making plans for 2023.

The Rangers have completed a variety of activities including Pilates, Debating and Quizzes. Since the New Year, the rangers have been taking part in activities for the "feel good" theme with healthy eating, fitness, friendship challenges etc.

Two new teams of rangers have started the Duke of Edinburgh award and will be out walking and practising for their Bronze Duke of Edinburgh award expeditions, learning first aid, navigation and compass skills. We are hoping that a group of Southwick rangers will shortly complete their Silver Duke of Edinburgh Award.

Many of the rangers also give up their time to help as young leaders in local rainbow, brownie and guide units.



## 1st Southwick Rainbows

**Rainbows - a fun and exciting programme for girls aged four to seven, it's all about learning by doing**

Rainbows meet on a Wednesday term time only at Southwick Village hall from 6-7pm. Currently we meet with the Brownies.

Last term we took part in S H A R E Girlguiding South West England campaign. The girls enjoyed different activities including bulb planting, cooking some biscuits and making friendship bracelets.

This term we are exploring countries taking part in the World Cup. Activities will include origami, cooking, games and dot painting.

If your daughter is interested in becoming a Rainbow please contact us at [southwickrainbows@gmail.com](mailto:southwickrainbows@gmail.com)



# Linked Pathways – Community Spaces (pt 2)

Jane Eaton

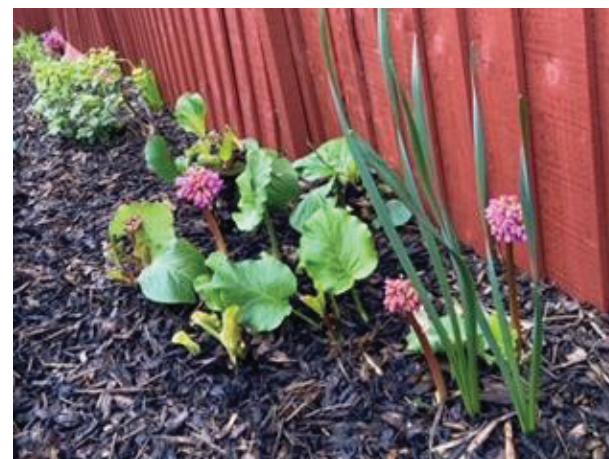
**I would like to acknowledge and recognise two people who have made a big difference to shared community spaces in our village. In this instance, the focus is on public pathways connecting some of Southwick roads.**

The first accolade goes to Brenda who has dedicated so much time and enthusiasm, working in all weathers to keep both hedgerows tidy, grass verges cut adjacent to where she lives. She has also worked on the church grounds as well as maintaining, planting up the border on the pathway between Wynsome Street and Hollis Way. There have been a variety of plants over the years and she has placed bark on the plot to keep weeds at bay. It has, and continues to be a pleasure to walk along for everyone, especially for parents and children as they go back and forth to school.



There are several link paths between Southwick roads and another one has been 'adopted' by Sarah, a keen gardener, with a passion for being outside in nature. The path links Chantry Gardens to Fleur De Lys and Sarah began this project in 2022.

It was a labour of love with that initial challenge of clearing a very overgrown, untidy patch of ground with not only lots of weeds and brambles but a fair amount of rubbish too! Of course, intrusive weeds continue to invade. We all know that old adage that a weed is a plant in the wrong place! Celandine



is one that is often placed in that category but here the celandine has been grown and is quite prolific in one area, providing a dense carpet of colour at this time of the year.

Sarah has been focussing on clearing the remaining border of weeds during April and plants are just beginning to take up their space, to grow and flower. In the early days most plants and bulbs were donated by Sarah but now other members of the community have been encouraged to contribute.

Some plants have already been given by local residents. Should you wish to donate a plant(s), please leave at No. 10 Fleur De Lys.

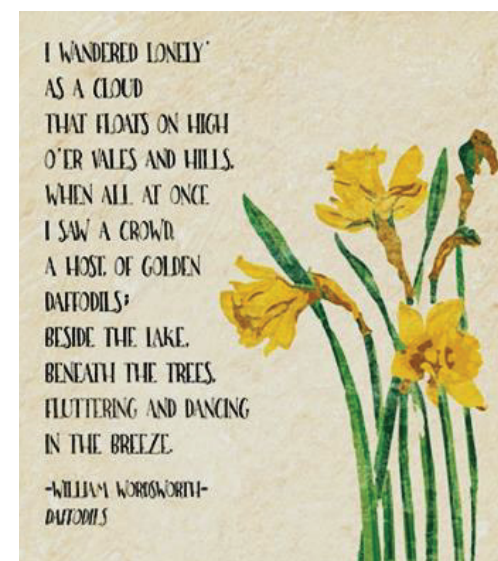
Hopefully, these two separate initiatives will encourage people

to take pride in where they live, dispose of litter responsibly and appreciate two spaces which have become colourful, well-tended and cared for community areas.

Thanks and appreciation go to Sarah and Brenda for taking the initiative,

making the commitment and putting in so much time to making our village a welcoming place to live.

*Could this be the catalyst for more like-minded people to makeover other 'wasteland' areas near their home?*





# Southwick Primary School – *UPDATE*

**We've had such a busy year so far at Southwick School – there is always something going on!**

Our Year 6 football team recently represented Wiltshire in the South West Finals, narrowly missing out on a trip to the National Finals in Manchester. To put this into context, they had to win a number of stages to get there and by our calculations we came fifth out of 2,105 schools in the South West – quite the achievement!

This term we have also enjoyed our Year 3/4 production of Pirates vs Mermaids. The children sang brilliantly, acted beautifully and made us laugh! We are incredibly proud of their maturity, patience and resilience.

Earlier this term we ran our own well-being day for the children. The aim was to encourage the children to recognise the importance of doing things they enjoy as a strategy to help them manage their own mental health and well-being. We enjoyed having local musician Kate Courage in school. Kate ran singing sessions for each year group while the other children did art, sport and mindfulness. It was a great day and we plan to do it again soon.

We're keeping our fingers crossed for some good weather over the coming weeks and months. As we head into the summer term, we have lots of things to look forward to including Sports' Day and our traditional Year 6 play.

Here is an update from our Year 3 Class. I've asked the teachers to write it alongside the children so it is their wording:

### *Year 3 Update*

In Anning Class (Year 3), we have been extremely busy! This term, our main focus was practicing our play: Pirates vs Mermaids. We had to learn lots of words and songs. Some of the songs were quite funny and had funny names like, 'Pool Party' and 'I'm a Parrot'. We really enjoyed performing in front of our parents and even got to have face paint on.

This term we have also been writing adventure stories based on the book, *The Night Pirates*. We used this to write our own adventure pirate stories and lots of us included scary creatures, like; sharks, skeleton octopuses and giant spiders!

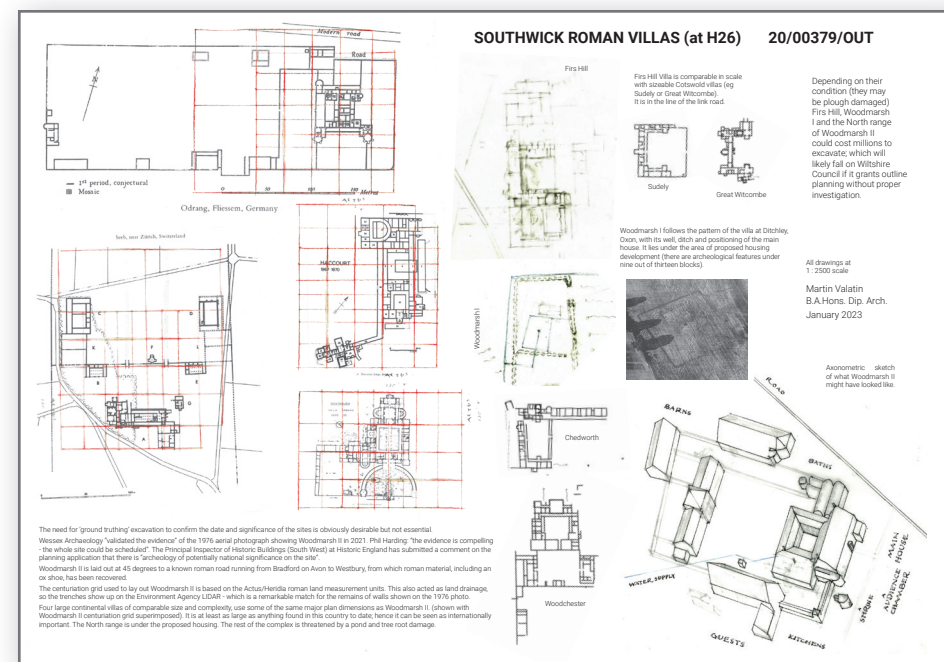
Finally, we have managed to fit in other exciting learning, including; French, Maths where we have learnt about length and measuring, DT where we built bridges and PE where we are learning Tennis so that we can take part in a tournament.



The  
countryside  
charity

# UPDATE

# Southwick's Hidden Gem



You may have already seen in The Times or Wiltshire Times, articles outlining the likely existence of an ancient Roman settlement and road beneath Southwick Court Fields.

In the centre of the article the architect Martin Valatin, a member of CPRE West Wilts.

Martin has a distinguished track record of finding hidden historical sites. The one at Southwick Court Fields is his latest find.

The discovery at Southwick Court Fields could well be of 'national significance' and could also stop proposed development on the site, at least until more details are known.

An archaeological dig is currently underway, and the Wiltshire Times are currently reporting that significant artefacts have already been unearthed.

We will be running more on this article in future editions of the Village News



## The Countryside Charity CPRE – Best Kept Village Competition –



The  
countryside  
charity

A call for entries to this years **Best Kept Village** competition will soon be going out to Parish Councils.

Although Southwick did not achieve an award last year, the village was highly rated by the judges as a newcomer to the competition, narrowly missing out on an award in that category.

One of the things that let the village

down was the amount of visible litter on our streets, verges and hedgerows.

In this respect, Southwick Parish Council are looking for some superstars to come forward to help with a '**Spring Litter Pick**' around the village over an up-and-coming weekend. Full litter pick equipment will be made available. If you're interested, then give me a call on **07818 870 098**.

Kind regards

John Eaton

*This is the W.I programme for April – June 2023*

**April 19th 2023**

**Dawn Lawrence talks about  
The Born Free Foundation**

**May 17th 2023**

**Resolutions, Beetle Drive, Tea & Cake**

**June 21st 2023**

**Different ways to make Flower Arrangements**

Our meetings start at 7.30pm in The Village Hall. Visitors welcome.

You can also follow us on Facebook - Southwick WI (Trowbridge )

*Anne Aland W.I Member*

theWI  
INSPIRING WOMEN

## FREE INTRODUCTORY ADVICE SERVICE SOUTHWICK (FIASS)

FIASS offers free benefit, debt and CV advice along with help preparing and responding to official letters. With Benefit advice we are able and qualified to check you are receiving your entitlement and also fill out lengthy forms on line.

If you have a debt problem, qualified debt counsellors are able to offer initial advice that will, hopefully, lead to a debt free future.

We can offer help with CV writing and interview techniques including writing formal letters.

We are supported by the Wiltshire Area Board, Southwick Residents Association, Southwick Baptist Church and the Southwick Primary School. Our team has years of experience to offer and we are passionate about what we can offer you. We can be contacted through our e-mail at [fiass.ba14@gmail.com](mailto:fiass.ba14@gmail.com)

## Southwick School are looking for a cleaner.

15 hours a week across 5 days. Start/finish times are flexible, but must be before or after school. Full training will be provided. If you are interested, please call Heidi or David at school on **01225 763325**.

We hope you enjoy reading the second edition of our 'new look' Village Newsletter. Going forward, we hope to provide a print version as soon as possible and will do so when advertising revenues start flowing back in once more.

If you have an interesting story or article for inclusion, or you wish to advertise please email us at [southwicknl@gmail.com](mailto:southwicknl@gmail.com)



# 50<sup>th</sup> Anniversary Art Exhibition on Hospitality, Peace & Reconciliation

## Opening of the Art Exhibition with the Artists

Thursday 1 June 7pm - 9pm

(further opening times, please contact The Ammerdown Centre)

Entrance with Cheese and Wine

£5 (payable on the door)

An open evening to meet the artists and view their work.

Suzanne Woodward • Lizbeth Spurgeon • Jane Eaton

Vivien Meadows • Tracey Quinn • Ingrid Gammage

Jane Sheppard • Paul Fine • Jo Waterworth

Lorna Thomas • Nicola Clarke

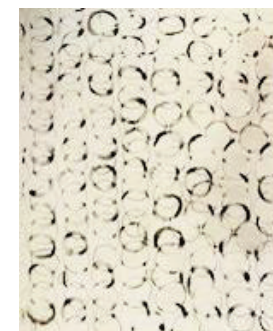
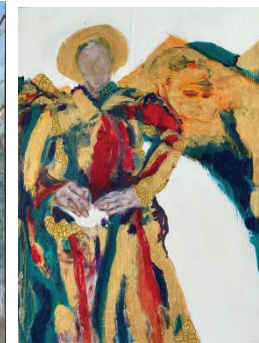
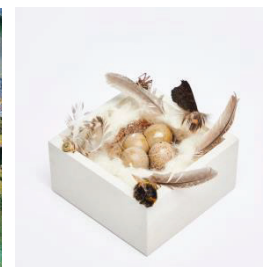
### Introduction to the Exhibition by Viv Meadow

"I asked a question... It's lovely to see exhibitions at Ammerdown, but what about an exhibition reflecting Ammerdown's Core Values? So as a volunteer, I found myself curating one..."

### Hospitality, Peace, Reconciliation

Ammerdown believes in a shared world, where diversity and different identities are cherished, where all can live free from the fear of violence and abuse, with dignity and respect, and where differences and conflicts are transformed peacefully.

This is what a group of local artists have come to reflect on, following a call-out to Frome and other artists via social media and Make Art. Including painting, collage, and 3D work, from 'nest boxes' to ceramics, you will also find digital art and music. The individual artists share a wish to communicate about the plight of creation and refugees, and the desire to build peace and communication within an increasingly fractured world. This exhibition seeks to reflect Ammerdown's values and to communicate this in a host of different ways, approaches and media.



Tel: 01761 433709

Email: [centre@ammerdown.org](mailto:centre@ammerdown.org)

The Ammerdown Centre, Ammerdown Park, Radstock, Somerset BA3 5SW

## Doctors & NHS

NHS Direct (Day & Night advice line) .....	111
Trowbridge Health Centre .....	01225 435757
Lovemead Group (Roundstone) .....	01225 759850
Trowbridge Community Hospital .....	01225 711300
A&G Minibuses (Hospital Rover) .....	01985 212213

## Chemists & Pharmacies

Boots - Trowbridge Health Centre .....	01225 710119
Boots - Roundstone Surgery .....	01225 775543
Boots - The Gateway (till midnight) .....	01225 752068
Superdrug - The Shires .....	01225 753104
Tesco Extra - County Way (till midnight) .....	01225 753104
Cohen's - 68 Brook Road, Trowbridge .....	01225 572604

## Dentists

Coleman & Starkey Timbrell Street .....	01225 753198
Mortimer Dental Practice Mortimer Street .....	01225 765116
BUPA Dental Care Stallard Street .....	01225 777170
Dental Care, The Halve .....	01225 430545
My Dentist, Meadow Court, Staverton .....	01225 351333

## Opticians

Boots Opticians & Hearing Centre .....	01225 719055
Carter & Harding, Fore Street .....	01225 752143
Haine & Smith, The Shires .....	01225 776871
Specsavers, The Shires .....	01225 775434
RD White, Roundstone Street .....	01225 753172

## Organisations

Wiltshire Council Customer Services .....	0300 456 0100
Wiltshire Council Planning Matters .....	0300 456 0100
Wiltshire Council Highways & Street Lighting .....	0300 456 0105
Wiltshire Council Dog Warden .....	0300 456 0107
Wiltshire Council Trading Standards .....	0845 404 0506
Trowbridge Town Council .....	01225 765072
Police & Fire Emergency .....	999
Police (non-emergency) .....	101
Fire Service (non-emergency) .....	01225 756530
Fire & Rescue Safety Checks .....	01380 723601
Selwood Housing .....	01225 715715
Crimestoppers .....	0800 555111
Citizen's Advice Bureau .....	03454 040506
Good Neighbour Co-ordinator .....	01380 722475
Trowbridge Community Area Link .....	07969 347042

## Schools & Colleges

Southwick CE Primary Hollis Way .....	01225 763325
Busy Bees Pre-school, Hollis Way .....	01225 753262
St. John's Primary Wingfield Road .....	01225 752006
Clarendon College Frome Road .....	01225 762686
St. Augustine's College Wingfield Road .....	01225 7350001
John of Gaunt Wingfield Road .....	01225 762637
St. Lawrence Ashley Road, Bradford on Avon ...	01225 309500
Wiltshire College College Road .....	01225 766241